



Museum Station Easier Access and Second Entrance/Exit

Public Presentation




March 2023

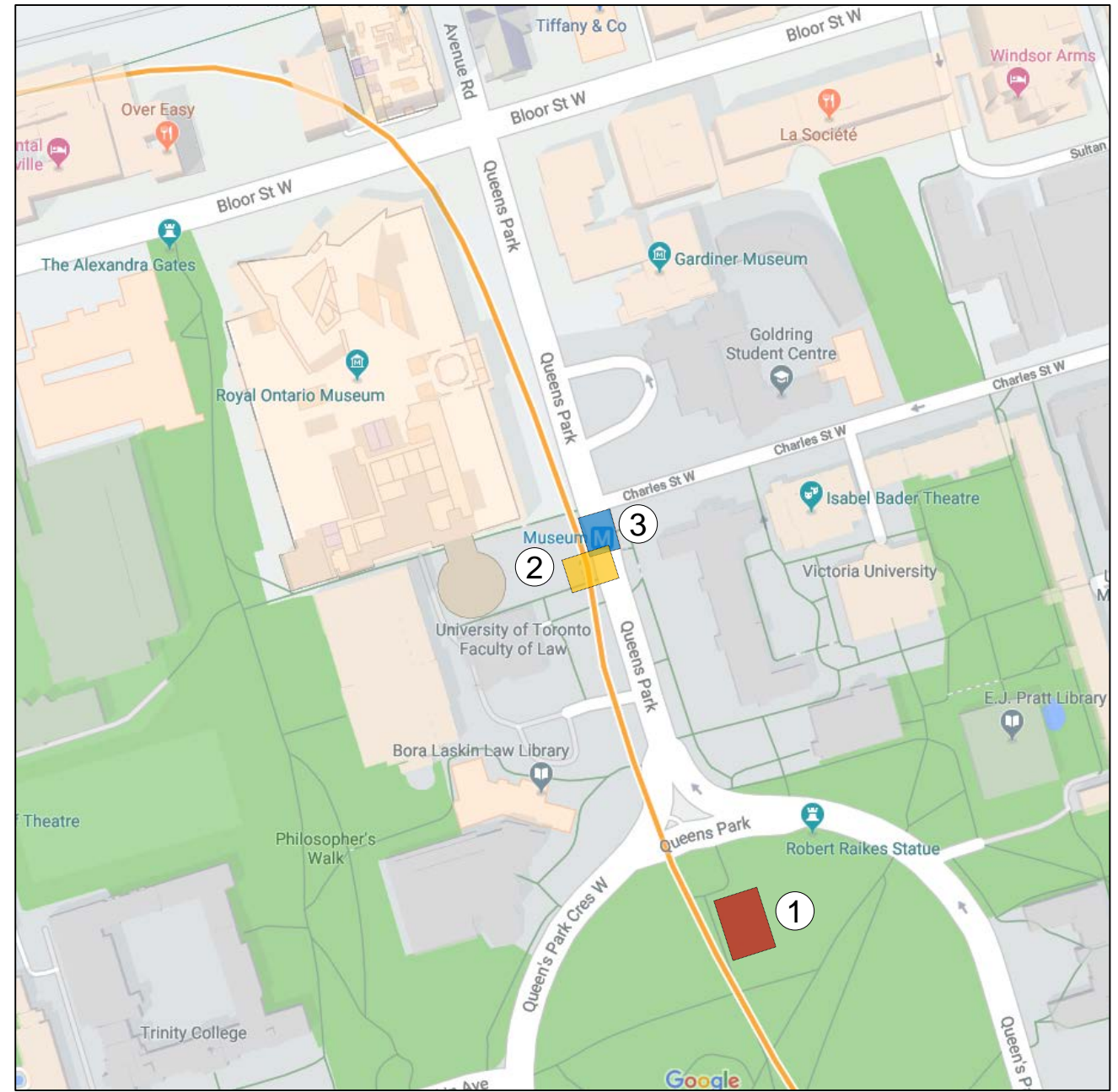
| New Second Entrance/Exit for Museum Station



| Background

Three projects will be underway at Museum Station starting July 2022 and ending in Q4 2024*:

-  1) Second Entrance/Exit
-  2) Easier Access – accessible upgrades
-  3) Rehabilitation of subway roof structure



| Second Entrance/Exit

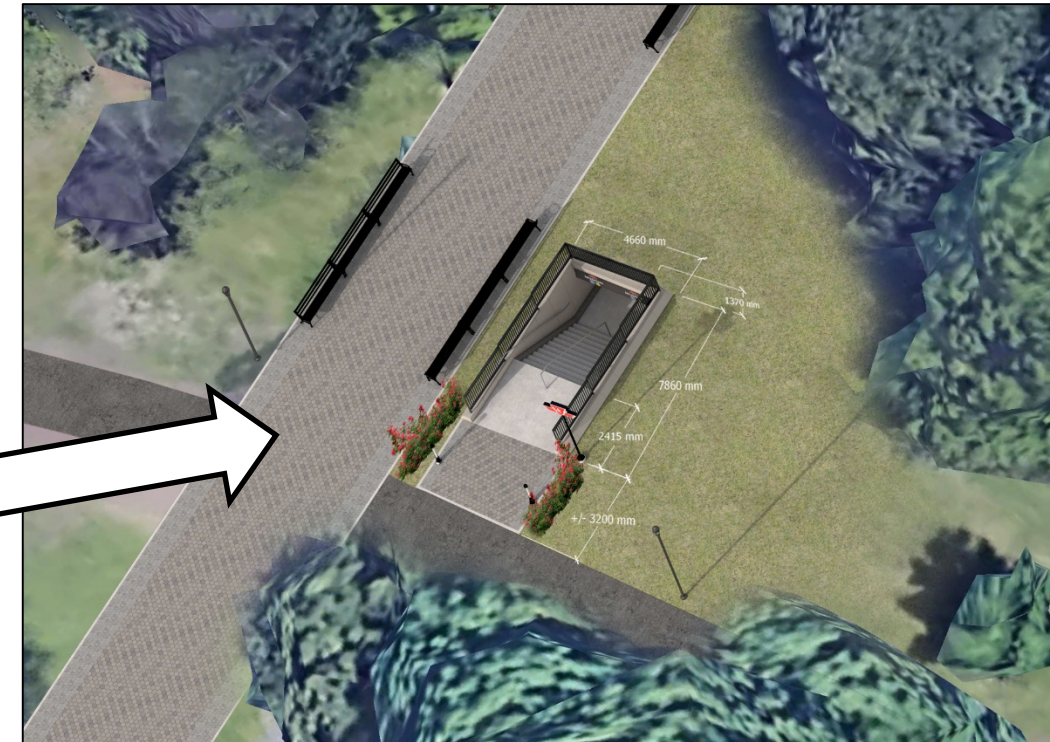
- Museum Station currently only has entrances and exits at the north end of the station.
- Adding a second exit/entrance at the south end of the station within Queen's Park will enhance customer safety.
- New second exit/entrance will be built in north end of Queen's Park.



Existing stairway entrance/exit at Museum Station

Queens Park North – second entrance/exit renderings

Aerial view of north end of Queen's Park Circle



Close-up of new second entrance/exit

| Queen's Park Circle – second entrance/exit renderings

Looking south towards the Ontario Legislative Building



Looking north west towards Jackman Law Building

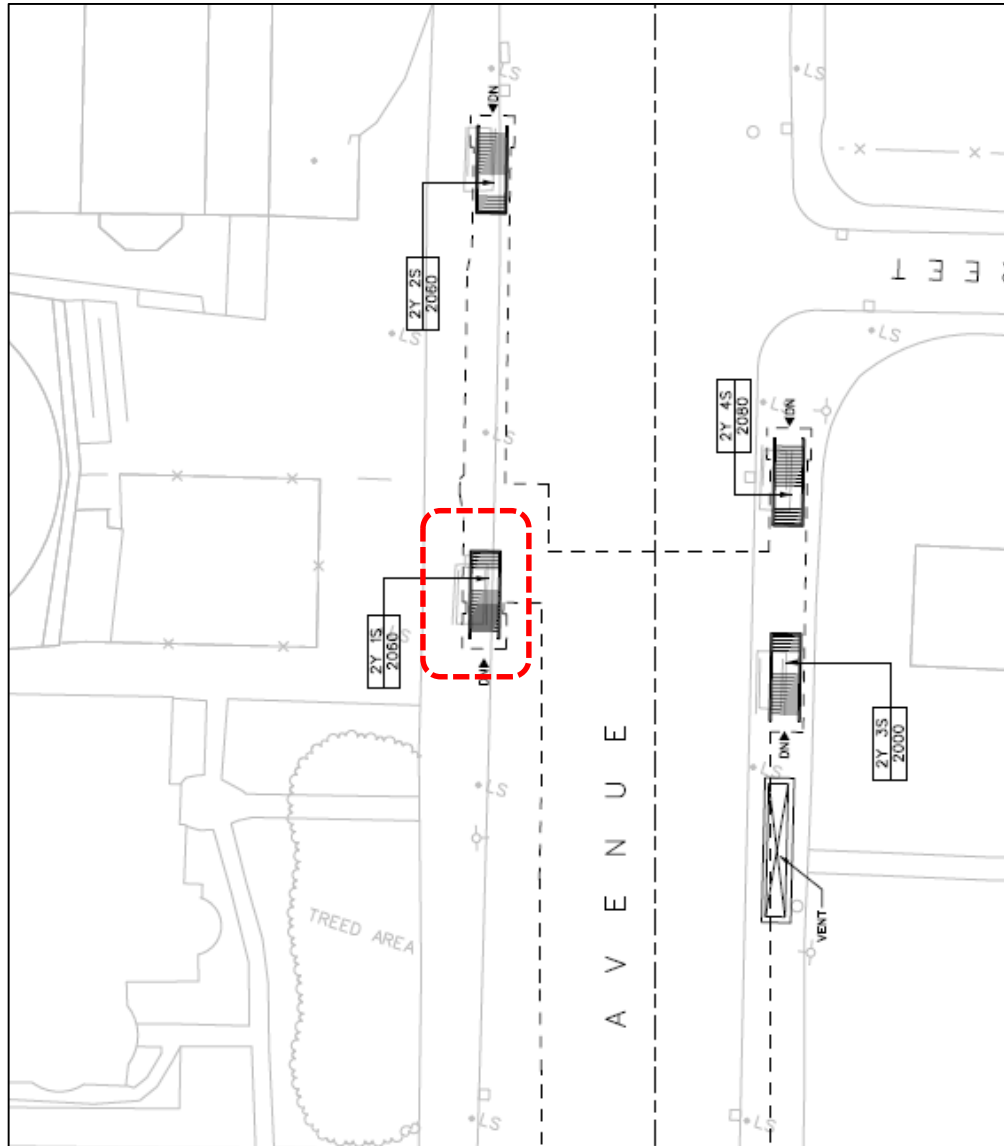


Construction staging – starting July 2022



- Pedestrian movement north-south across the park and adjacent to work zone will be maintained
- Clear pedestrian signage will be installed.
- Construction vehicles and equipment will enter from the north
- Trees will be protected or transplanted and relocated as required
- Furniture, pavers, landscaping will be restored at the end of construction

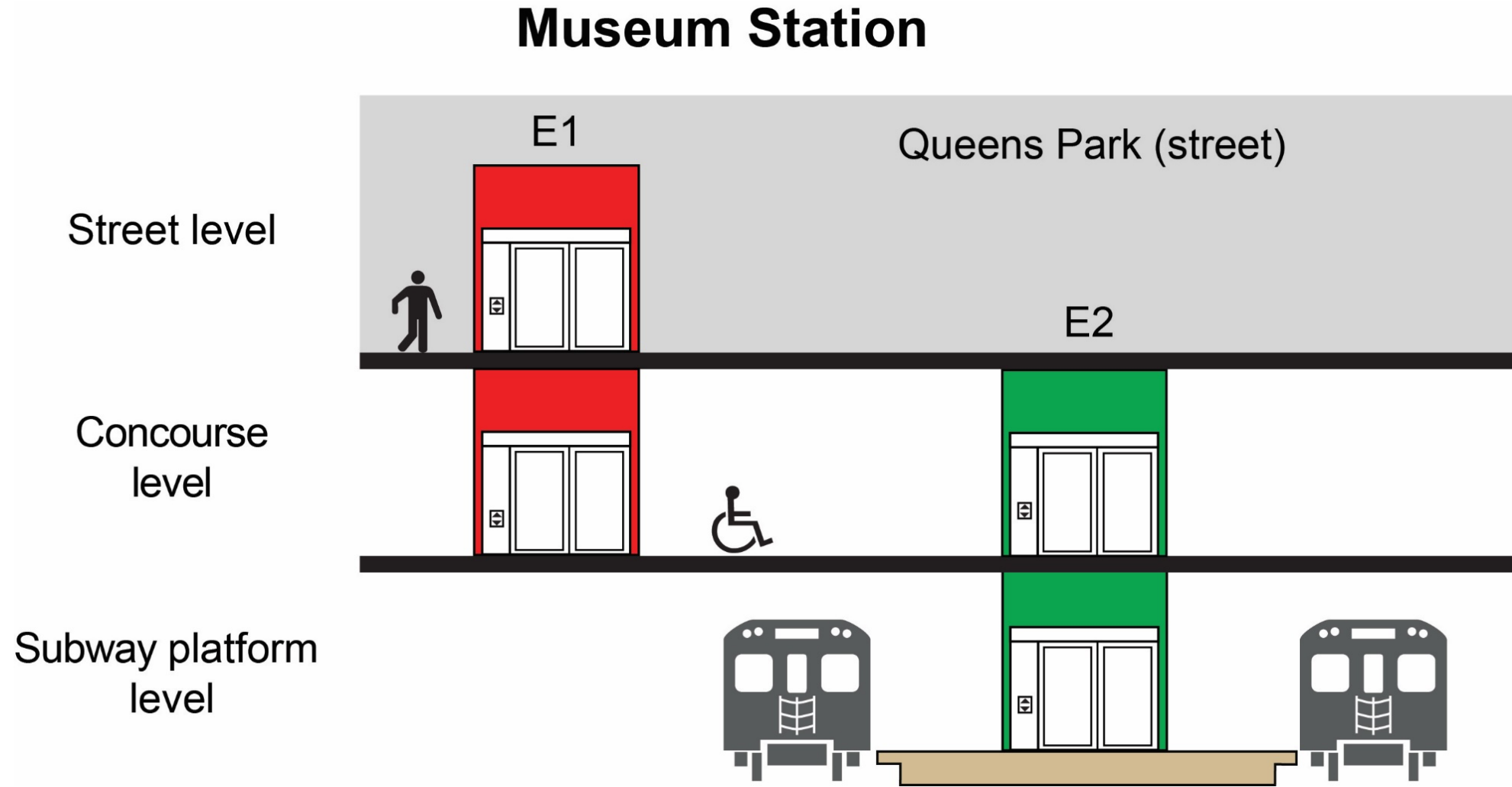
Museum Station – elevator at street level

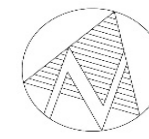


Existing south stairs on west side will be permanently closed and reconstructed to house new elevator structure – street level to concourse (E1)



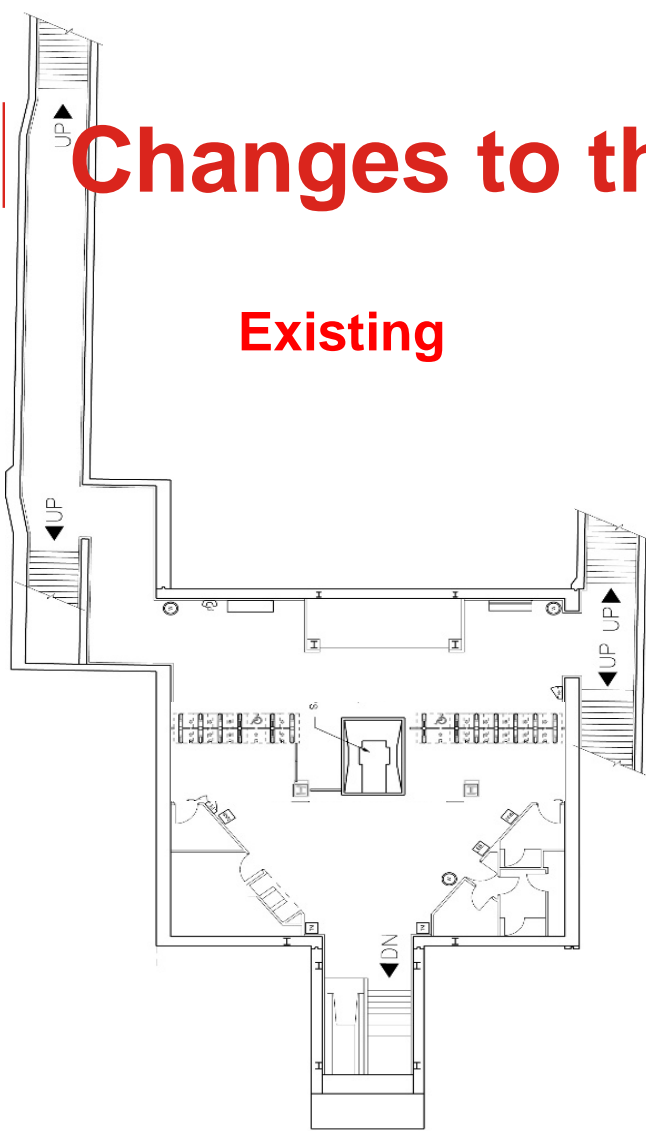
Museum Station Elevator Plan





Changes to the concourse level

Existing

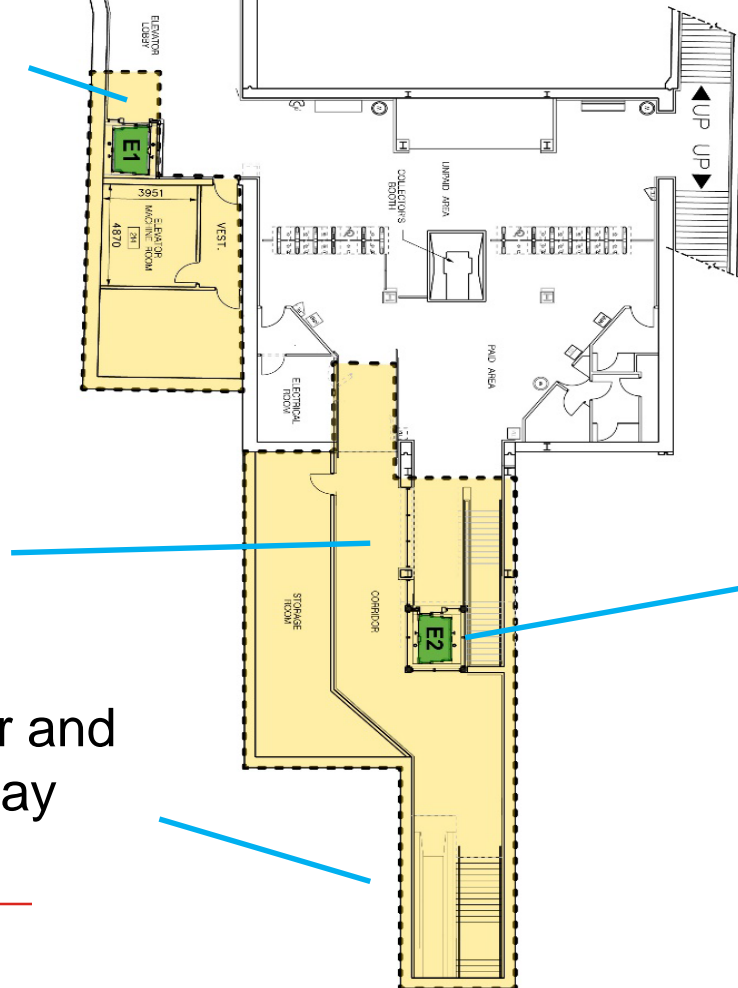


Post-construction

Existing stairs on west side converted to new elevator (street to concourse)

New ramp and corridor

New escalator and stairs to subway platform level



- Existing escalator replaced with new elevator (concourse to subway platform)
- Stairs reconstructed

| Changes to the concourse level

- Many structural elements at the concourse level will be reconstructed, including:
 - Constructing two elevators – street to concourse (E1) and concourse to subway platform (E2)
 - Removing an existing escalator to make way for E2 elevator
 - Constructing new staircase and escalator.

| Changes to the concourse level

- To complete this concourse work safely, the existing north entrances to Museum Station will be closed for approximately 8 months in 2023 – timing to be confirmed and communicated in advance.
 - This closure will take place **after** the new second entrance/exit is open.
 - All customers will be directed to the new Queen's Park Circle entrance.



New second entrance/exit at north end of Queen's Park Circle

| Structural Rehab

- The station roof below Queen's Park (street) requires rehabilitation and waterproofing.
- Will occur concurrently with Easier Access work and temporary lane closures on Queen's Park

| Temporary pedestrian crossing closures

- During work hours, temporary closures of the north pedestrian crossing are expected when work vehicles are entering/exiting the work zone.
- Flagpersons will assist pedestrians as required.



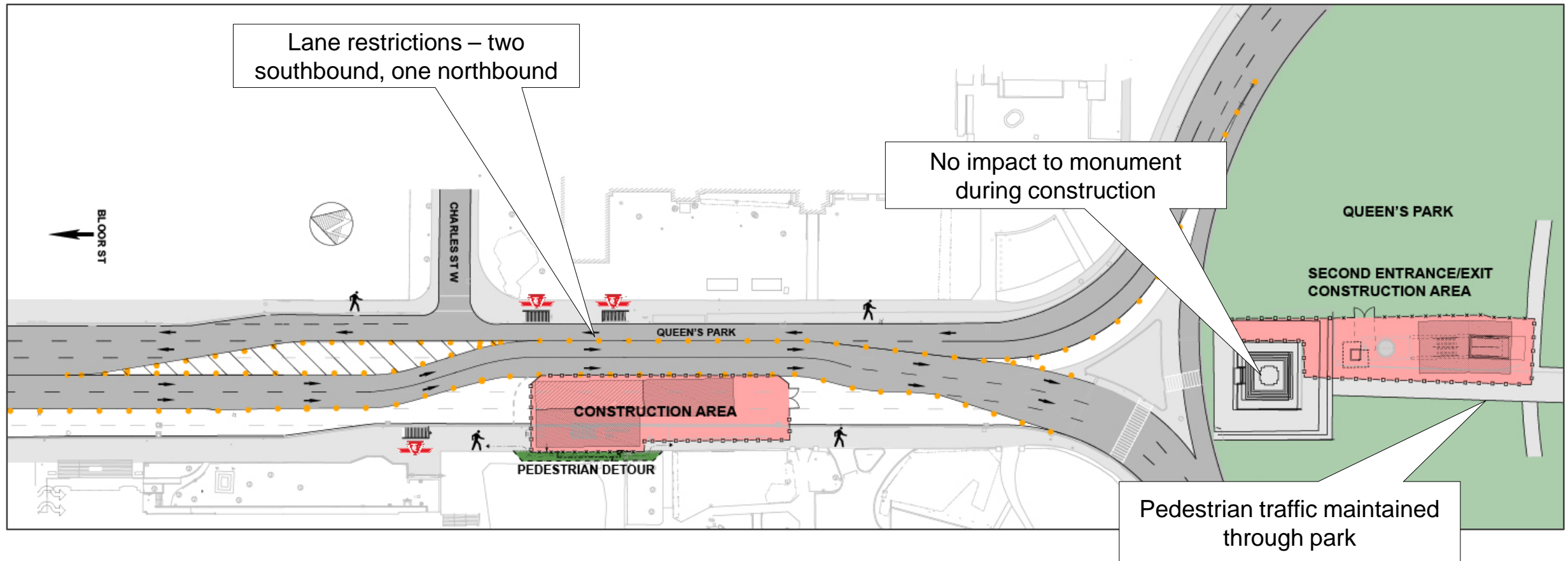
North end of Queen's Park Circle, looking east

| Construction traffic staging on Queen's Park (street)

- Lane restrictions will be in effect south of Bloor Street
- Minimum one traffic lane in each direction maintained at all times
- Cycling detour will be in effect – see slide 22

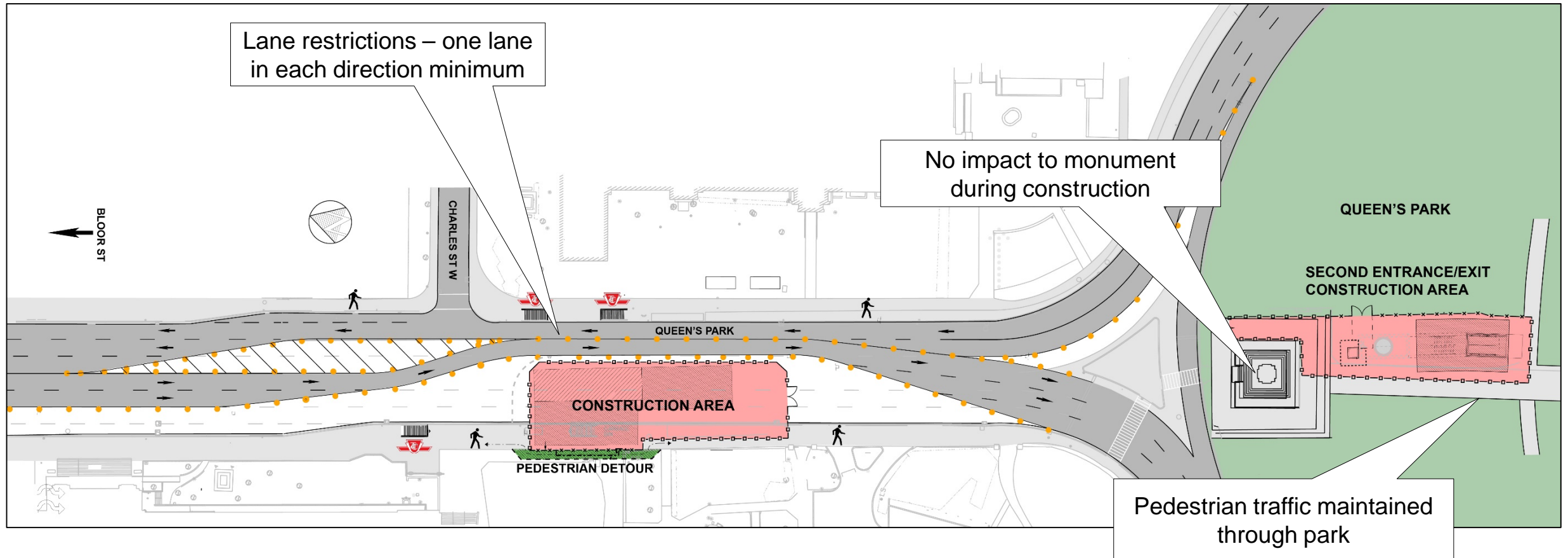
| Phase 1A – July 2022 to December 2022*

- Easier Access and Second Entrance/Exit construction begins



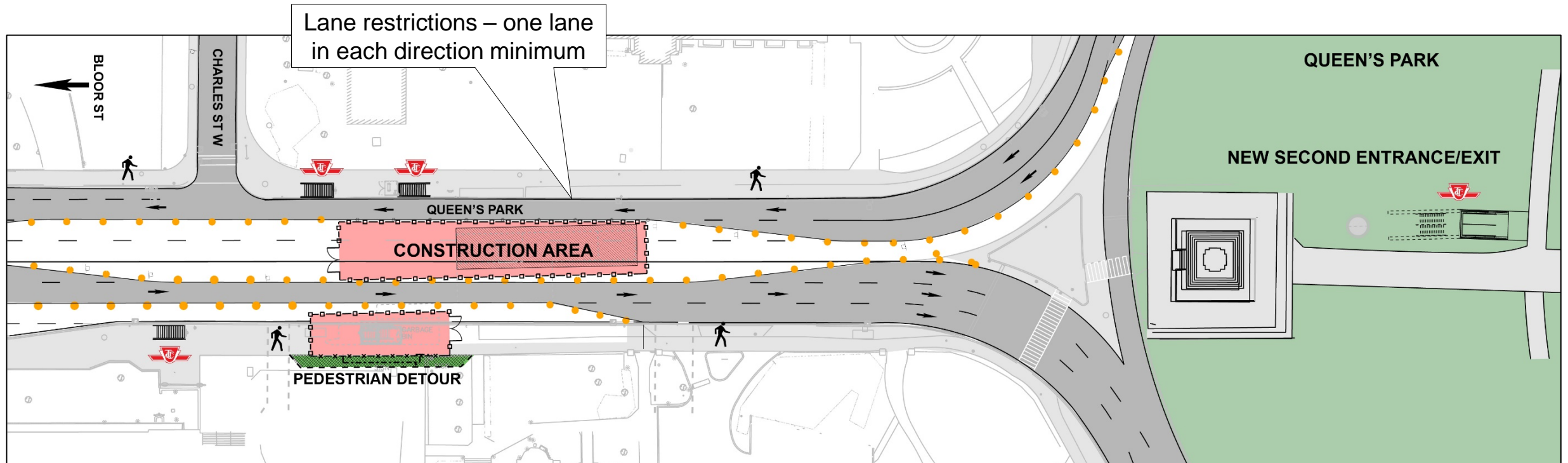
| Phase 1B – December 2022 to Q2/Q3 2023*

- Easier Access and Second Entrance/Exit construction



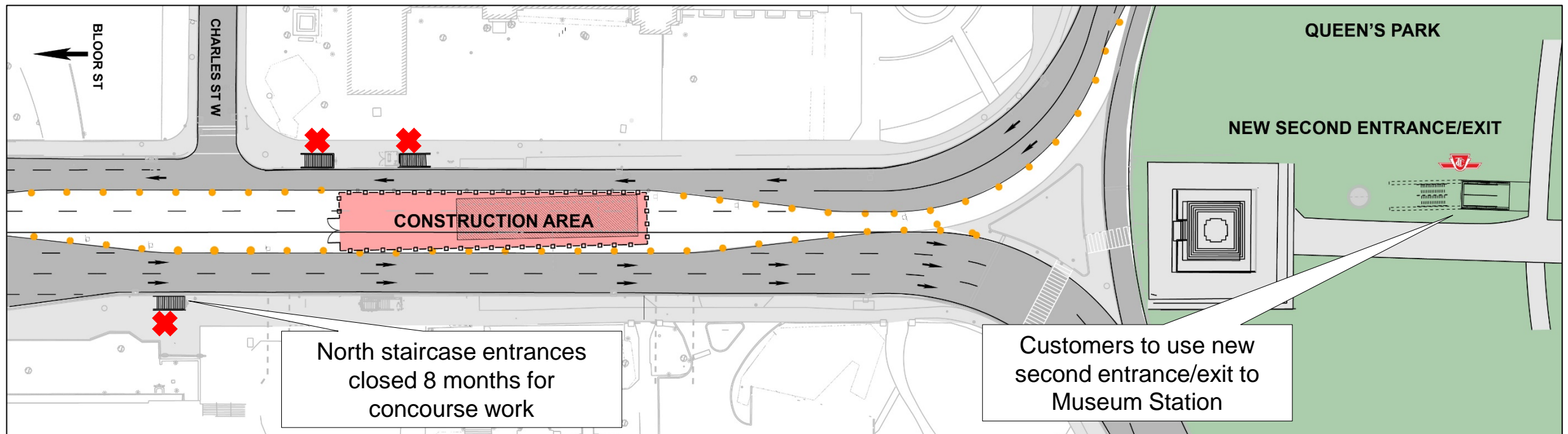
| Phase 2 – Q3 2023 to Q4 2023*

- New second entrance/exit in Queen's Park completed by Phase 2



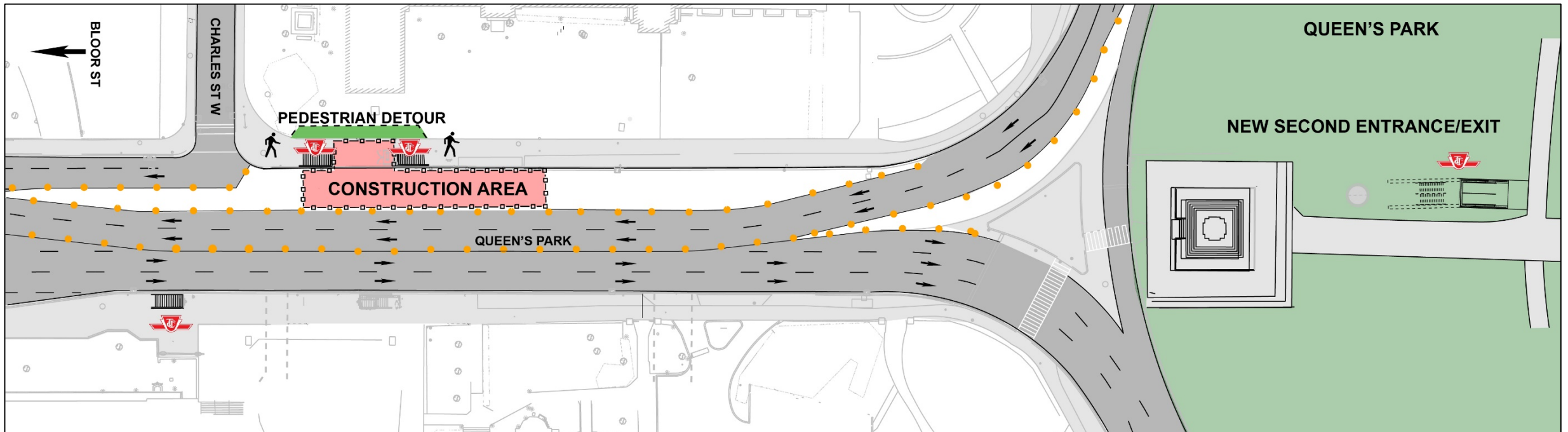
| Phase 3 – Q4 2023 to Q2 2024*

- North entrances to Museum Station will be closed in Phase 3 for approx. 8 months
- Customers to use the new second entrance/exit in Queen's Park Circle during this time



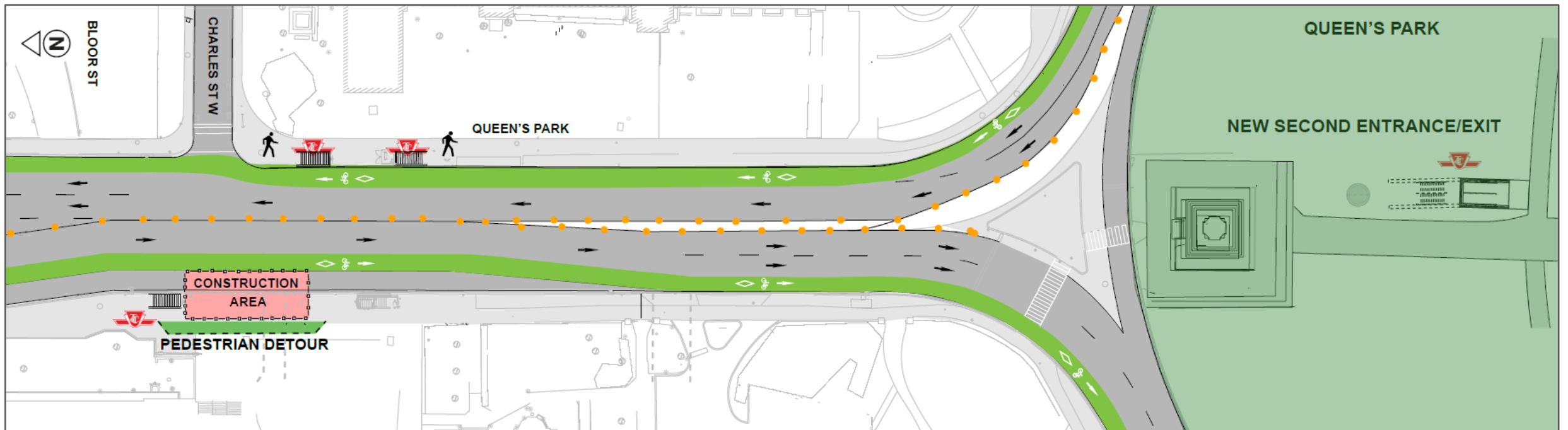
| Phase 4 – Q2 2024 to Q3 2024*

- All entrances open to TTC customers
- Rehabilitation and waterproofing work at north entrance of Museum Station

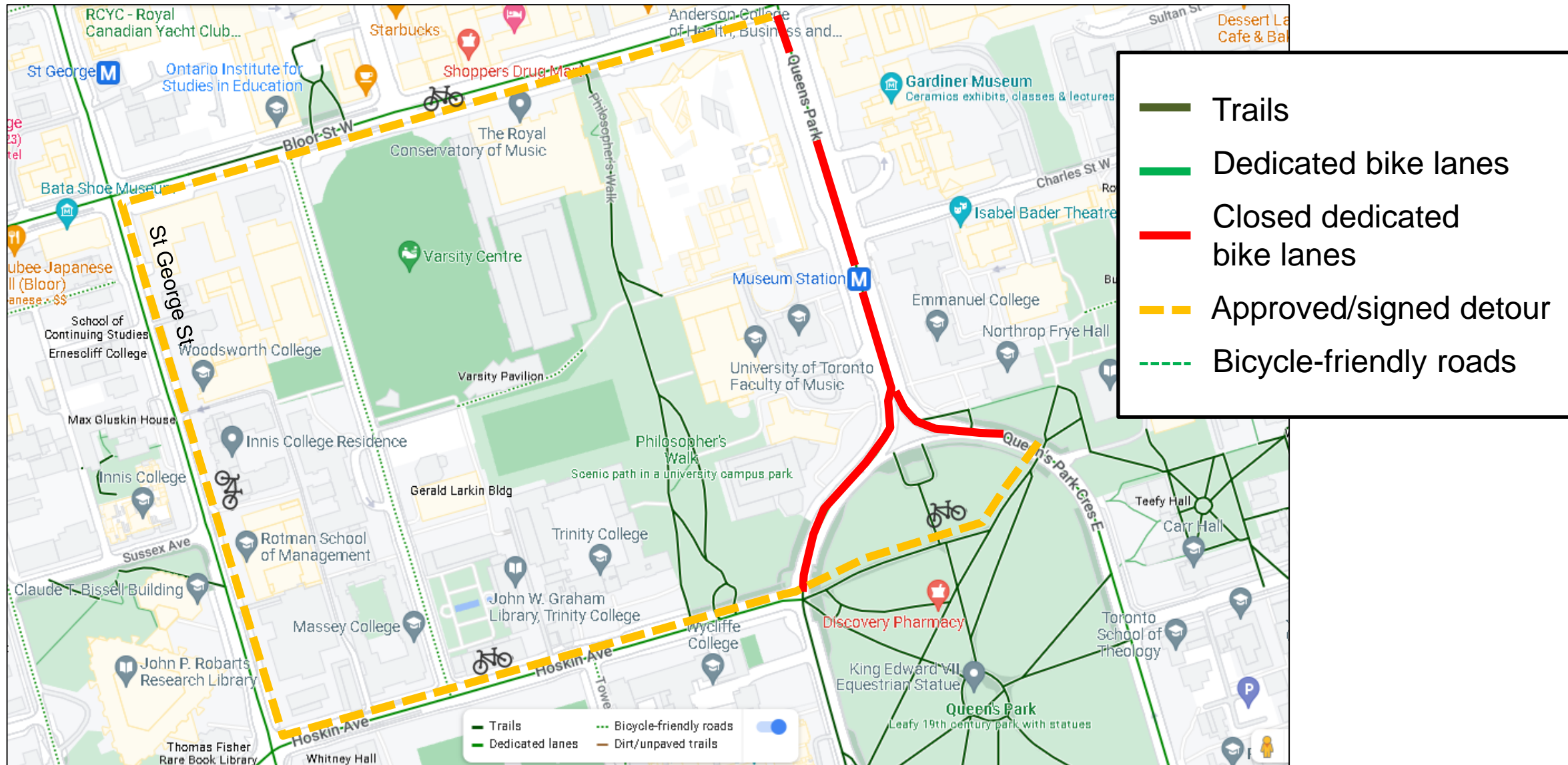


Phase 5 – Q3 2024 to Q4 2024*

- All entrances open to TTC customers
- Rehabilitation and waterproofing work at north entrance of Museum Station
- One northbound lane, one southbound lane
- Designating two traffic lanes (curb lanes) as bike lanes will be decided by the City of Toronto



Cycling detour during construction on Queen's Park



| Construction Details and Transit Information:

- Major construction activities include shoring and excavation of elevator shafts – phased lane closures required
- Work will typically take place Monday to Friday between 7 a.m. and 7 p.m. Some work on weekends between 9 a.m. and 7 p.m. may be required. For safety, overnight work may be required.
- Efforts will be made to keep disruption associated with noise and dust to a minimum
- Access to subway service will be maintained throughout construction.



| Questions or comments?

Connect with the community liaison for this project for any questions or comments, or to be added to the project mailing list:

Nick Chan, Senior Community Liaison, 416 931 6754, Nick.Chan@ttc.ca

The station is scheduled to be accessible by Q4 2024.

